



ToxTalk

The official publication of the SOCIETY OF FORENSIC TOXICOLOGISTS, INC.

VOLUME 26 No. 2

JUNE 2002

ToxTalk Editor

Joseph R. Monforte, Ph.D., DABFT
42408 N. Sombrero Rd.
Cave Creek, AZ 85331-2821
E-mail: DrMonforte@aol.com

Editorial Staff

H. Chip Walls, B.S.
Vincent Papa, Ph.D.
Donald Kippenberger, Ph.D.
Daniel Anderson, M.S.

Publisher

Patricia Mohn-Monforte

SOFT Board of Directors

President:

Laurel J. Farrell, B.A.

Vice President:

Amanda Jenkins, Ph.D., DABC, DFTCB

Secretary:

Graham Jones, Ph.D., DABFT

Treasurer:

Daniel Isenschmid, Ph.D., DABFT

Other Directors:

Michael Baylor, Ph.D.

Anthony Costantino, Ph.D., DABFT

J. Rod McCutcheon, B.S.

Timothy Rohrig, Ph.D., DABFT

Diana Wilkins, Ph.D.

ex officio:

Michael L. Smith, Ph.D., DABFT

Joseph R. Monforte, Ph.D., DABFT.

S.O.F.T. Administrative Office

P.O. Box 5543

Mesa, AZ 85211-5543

Phone/fax: 480-839-9106

Website:

www.soft-tox.org

Email:

info@soft-tox.org

IN THIS ISSUE . . .

NEW ITEM:

☒ ToxTalk NETWORK - Sharing Problems and Solutions

☒ President's Message

☒ Elmer Gordon Open Forum

☒ Career Opportunities

☒ Professional Calendar

☒ Journal Club: MDMA (C Walls)

☒ *Toxichem + Krimtech* (D Kippenberger)

☒ New Drugs: Donepezil (M Shaw)

☒ Case Report: Phencyclidine (D Anderson)

☒ Drugs in the News: Inhalants (V Papa)

MDMA (V Papa)

INSERTS

☒ 2002 SOFT Meeting Information

☒ 2002 SOFT Directory (Members only)

SOFT 2002
DEARBORN, MI
(Detroit Area!)

Hyatt Regency, Dearborn, MI

October 13 - 17, 2002

ToxTalk is mailed quarterly (bulk mail) to members of the *Society of Forensic Toxicologists, Inc.* It is each member's responsibility to report changes of address to the SOFT mailing address (Mesa, AZ - above). Non-members may now receive ToxTalk for \$15 per calendar year. Make your check payable to SOFT and mail it directly to the ToxTalk Editor.

DEADLINES: Feb. 1, May 1, Aug. 1, and Nov. 1.

NEXT DEADLINE: AUGUST 1, 2002

PRESIDENT'S MESSAGE by Laurel J. Farrell, B.A.

Spring has sprung! Longer days provide a renewed energy for getting things accomplished. Have you turned in that abstract for SOFT 2002 in Dearborn? Scientific program chair, Amanda Jenkins, will accept abstracts until June 1st. Meeting information is included in this issue of ToxTalk and can also be found on the SOFT web-site. Brad Hepler and Dan Isenschmid, 2002 SOFT meeting co-hosts, appear to be following in the paths of past great hosts – lots of opportunities for science, networking and even fun!

If you think SOFT is a busy organization only in October, you are wrong! SOFT committees work throughout the year, and here are a few examples:

Both the Drug Facilitated Sexual Assault committee and the Joint SOFT/AAFS Drugs and Driving committee are coordinating workshops at the upcoming meeting. "Club drugs" continue to be in the news and are found in DFSA cases. This workshop will present an update on popular drugs as well as emerging drugs. The DUID workshop will provide a unique opportunity for attendees.

Dr. Jan Ramaekers from the Netherlands will present on-the-road impaired driving research. University of Iowa's Dr. Ginger Watson will also join the faculty contributing information and research from the

National Advanced Driving Simulator. The DUID committee hoped to have the monographs, recently published in Forensic Science Review, posted in the member's section of the web-site by the time of this publication, but that has been slightly delayed. Access the SOFT web-site for further information.

The Continuing Education committee is still finalizing its next project. Compiling another tremendous JAT Special Issue is the responsibility of Rod McCutcheon and his group of guest reviewers.

Bruce Goldberger, through his tireless efforts as SOFT's webmaster, has now made the membership directory available, improved the quality of printed pages and provides timely communication to all members. ToxTalk Editor Joe Monforte, assisted by Pat, continues to take on the huge task of providing ToxTalk to all.

Our other standing committees silently keep SOFT business in order, and I thank each of you who give your time to SOFT.

I wish you all renewed energy for your careers, projects on your to-do list, and for family and friends. Take time to stop and smell the flowers - don't just analyze them!

See you in Dearborn! ☺

President Farrell encourages your comments and ideas. Contact Laurel at laurel.farrell@cdps.state.co.us

WEB SITE UPDATE

Visit the SOFT web-site at www.soft-tox.org and for the latest information on items of interest to SOFT members. Web Master Bruce Goldberger welcomes comments. To gain access to SOFT's on-line membership directory and drugs and driving pages, you must type the username: **drugs** and password: **#cocaine!** (NOTE: the ! omitted in the March edition of ToxTalk is somewhere in cyberspace)

SOFT broadcast messaging is based on members' e-mail addresses from the 2001 SOFT Directory. If you change your e-mail address, you must contact the webmaster directly at info@soft-tox.org to receive SOFT broadcast messages. If you did not get the 5/14 broadcast regarding the SOFT meeting abstract deadline, contact the SOFT Web Master. ☺



SOCIETY OF FORENSIC TOXICOLOGISTS

2002 ANNUAL MEETING

DEARBORN, MICHIGAN
OCTOBER 13-17, 2002

PRELIMINARY INFORMATION

Plan now to attend the 2002 Annual Meeting of the Society of Forensic Toxicologists at the beautiful Hyatt Regency in Dearborn, Michigan, conveniently located between the Metropolitan Wayne County Airport and Downtown Detroit. The meeting will feature workshops on Sunday and Monday and scientific sessions Tuesday through Thursday. Many special events will be featured including a gala President's reception Wednesday evening at the Henry Ford Museum. Additional information on the meeting, including abstract forms and registration materials, will be available from the SOFT website and in this issue of **ToxTalk**.

We look forward to seeing you in Southeast Michigan for the 2002 Fall Foliage Season!

Bradford Hepler, PhD
Meeting Co-Host
Bhepler@co.wayne.mi.us

Daniel Isenschmid, PhD
Meeting Co-Host
Disensch@co.wayne.mi.us

Amanda Jenkins, PhD
Program Chair
cccotox@inetmail.att.net

ToxTalk NETWORK: *Sharing problems and solutions*

SOFT member Rory Doyle of the California Department of Justice asks if anyone has experience with the analysis of the following compounds in biological fluids:

5-Methoxy-N,N-Dimethyltryptamine (5-MeO-DMT)
N,N-diisopropyl-5-methoxytryptamine (5-MeO-DIPT)
4-Acetoxy-N,N-diisopropyltryptamine (4-Acetoxy-DIPT)
4-Hydroxy-N,N-diisopropyltryptamine (4-OH-DIPT)
2,5-dimethoxy-4-(n)-propylthiophenethylamine (2C-T-7)
4-bromo-2,5-dimethoxyphenethylamine (2C-B)
Dimethyltryptamine (DMT)
and other drugs within the PIHKAL and TIKHAL book.

Rory has had a few cases from various California university towns where these drugs were reported to have been taken, and he is being asked if these are something to look for. Has anyone performed toxicological analysis of these compounds in biological fluids and, if so, what methods were carried out and what instrumentation was used? Also, might these compounds cross-react with Immunoassay systems? How can a forensic lab analyze them with GC/MS, especially, or LC/MS? Rory adds that these drugs are synthesized and not found in herbal supplements except for DMT in Ayahuasca plants.

Any help would be appreciated. If anyone has experience with these drugs contact Rory.Doyle@doj.ca.gov or telephone Rory Doyle at 916-227-3620 ☎

(Editor: We'd be interested in publishing comments in the next issue of ToxTalk.)

Donepezil (Aricept®)

Submitted by Melanie Shaw, Montana Forensic Science Division

Manufacturer: Pfizer and Eisai as 5 or 10 mg tablets.

FDA Approval: 1996

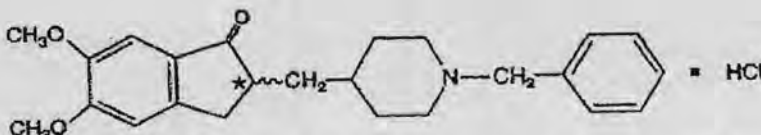
Use: Donepezil is a reversible inhibitor of acetylcholinesterase used in the treatment of Alzheimer's Disease to improve cognitive performance.

Chemical Name: (+/-)-2,3-dihydro-5,6-dimethoxy-2-[[1-(phenylmethyl)-4-piperidinyl]methyl]-1H-inden-1-one hydrochloride.

Molecular Formula: C₂₄H₂₉NO₃ HCl

Molecular Weight: 379.5

Formula Weight: 415.96



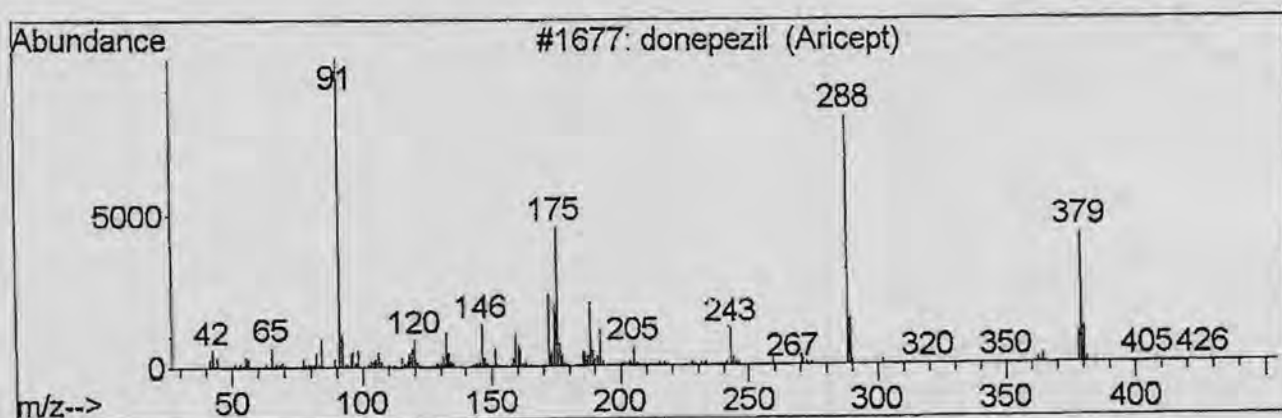
Pharmacology: Low rate of binding to CYP 3A4 and CYP 2D6, not thought to interfere with clearance of other drugs. Possible side effects: bradycardia, increased gastric secretion, seizures, nausea, and vomiting.

Extraction Information: Donepezil is a basic drug that can be extracted with an n-butylchloride liquid/liquid (single-step) extraction. If a back extraction is performed, the recovery of the drug is significantly less.

Instrumentation: Detection of donepezil is possible by either GC/NPD or GC/MS.

Relative retention time of donepezil to other commonly encountered basic drugs are as follows: papaverine, strychnine, trazodone, **donepezil**. (trazodone and donepezil r.t. almost identical).

GC/MS Ions: 91, 288, 175, 379, 188 m/z



Case Report: Elderly male died by suicide (hanging). This was his only prescription.

"NEW DRUGS" FEATURE: Submit information on new drugs relative to forensic toxicology to Daniel Anderson, M.S., L.A. County Coroner's Dept., 1104 N. Mission Road, Los Angeles, CA 90033
E-mail: danderso@co.la.ca.us Ph: 323-343-0530

Toxichem + Krimtech

Submitted by Donald Kippenberger, Ph.D.

New Bühlmann ELISA TEST for determination of Amanitins in urine

Authors: Roland F. Staack and Hans H. Maurer, Department of Experimental and Clinical Toxicology, Institute of Pharmacology and Toxicology, University of Saarland, D-66421 Homburg (Saar). (2000) 68 (2): 68

Amanita Phalloides (Death Cap) is the most poisonous mushroom, causing the majority of severe mushroom intoxications. It has been estimated that 10 – 40% of these intoxications lead to death. The high toxicity is mainly attributable to the amatoxins. In particular α - and β -amanitin serve as the target analytes for diagnosis. These microtoxins also occur in white *Amanita* species and are found in small *Lepiota* and *Galerina* species.

Rapid and specific detection of the amatoxins in body fluids is necessary for early diagnosis and clinical intervention. Urine is the most important sample for diagnosis since the majority of patients present at the emergency room 12 hours after ingestion of the mushrooms. By this time the amatoxins have been eliminated from the plasma. To the best of our knowledge, in emergency cases RIA and IAE-LC-MS are the routine methods of detection. Recently, an ELISA kit has been introduced. This paper was an attempt to determine how this assay would perform.

One hundred urines from routine daily toxicological analysis were tested by manufacturers suggestions for the new amanitin ELISA kit (EK-AM 1) of Bühlmann Laboratories (Allschwil, Switzerland) distributed by DPC Biermann (Bad Nauheim Germany) to detect possible cross reactivities. With a cutoff of 10 ng/ml to detect a positive and a stated LOD of 1.5 ng/ml, all samples showed no reaction above 1.5 ng/ml, thus indicating that these kits appear to show no urine matrix interferences.

The specificities of the RIA, ELISA and LCMS methods are shown below.

Assay	α -amanitin	β -amantin	γ -amanitin	δ -amanitin	Phalloidin
RIA	100%	44%	100%		>0.01%
ELISA	100%	0.1%	90%	0.1%	
LCMS	100%	100%			

It has to be noted that the concentration values determined by ELISA and RIA cannot be compared since the two kits use different antibodies. The cutoff for both kits is 10 ng/ml in spite of the differing cross reactivities. The authors were concerned that the ELISA kit might miss low positives due to the kits low specificity for β amanita. They note that to the best of their knowledge there is no mushroom that does not have α amanita.

The authors feel that the strength of the ELISA assay is:

1. You do not have to deal with radioactivity/disposal, etc.
2. The kit is available throughout the year, while RIA kit life time is limited by the stability of I^{125} tracer. ☠

DRUGS IN THE NEWS

Submitted by Vincent M Papa, Ph.D., Air Force Drug Testing Laboratory, Brooks AFB, Texas 78258

INHALANTS - A SITE OF ACTION?

Recently, researchers in the journal, *Life Sciences*, reported that toluene affects the same pleasure centers in the brain as cocaine and other drugs. Toluene is an aromatic petroleum hydrocarbon with a 72-hr half-life in whole blood. It is present in household products and gasoline additives. A popular abuse method is sniffing or "huffing."

The TLV for atmospheric exposure is 50 PPM. Blood toluene concentrations in 37 nonexposed hospital workers ranged from 0.47 ug/L in non-smokers to 1.14 ug/L in smokers.¹ Foo et.al (1991) demonstrated that subjects exposed to toluene in concentrations of 38 ppm for 8 hours averaged 0.59 mg/L.² Whole blood elimination half-life averages 4.5 hrs with a range of 3-6 hrs and a terminal half-life of 72 hours.³ 80 % of an absorbed dose of toluene is metabolized to benzoic acid which is further conjugated with glucuronic acid or glycine in the urine. The glycine conjugate accounts for 68% of a dose in a 24 hr. urine. The excretion half-life is 2-3 hrs. Glucuronic acid conjugates are important only when large amounts of toluene are ingested. Hippuric acid averaged 0.8 g/L in non-exposed persons. However, workers exposed to average daily levels of 50 ppm developed urinary concentrations of 1.26-2.93 g/L. Toluene is oxidized to a very minor extent to o-, m- and p- cresol. O- and m-, cresol are not normally found in the urine.

Alveolar air concentrations of toluene peak within 15-30 minutes after the start of an exposure and decline rapidly after exposure cessation. After exposure to 100 ppm, concentrations averaged 18 ppm at rest, 31 ppm during light exercise and 38 PPM with moderate exercise.⁴

Employee exposure to toluene vapor at 200-500 ppm for several weeks produces symptoms of headache, nausea, lassitude, impairment of coordination and loss of memory. Exposure to concentrations of 10,000-30,000 ppm may cause drowsiness, mental confusion and unconsciousness within minutes. Toluene has been frequently abused for its intoxicating effects by teenagers or adults. A report on a series of 136 subjects who were hospitalized or arrested while intoxicated showed blood concentrations of 0.3-30 mg/L and urine concentrations of 0-5.0 mg/L.⁵ Short-term abuse of toluene can be manifested by slurred speech, slow movements, and inability to concentrate. Long term habituation can result in electroencephalographic abnormalities, encephalopathy, cerebral atrophy, metabolic acidosis, hypokalemia, and hyperchloremia.

Analysis for toluene and its metabolites, including hippuric acid and cresols, have been described using colorimetric, headspace chromatography and liquid chromatographic techniques.

References

1. Brugogne, f., Perbellini, L., Faccini, G.B., Breath and blood levels of benzene, toluene, cumene and styrene in non occupational exposure. *Int.Arch.Acc.Env.Health* 61: 303-311, 1989.
2. Foo, S.C., Jeyartnam, J., Ong, C.N., Biological monitoring for occupational exposure to toluene. *Am. Ind. Hyg. Asso. J.* 52: 212-217, 1991.
3. Burgogne, F., DeRosa, E., Perbellini, L., Bertolucci, G.B., Toluene concentrations in blood and alveolar air of workers during the workshift and the morning after. *Brit.J.Ind.Med.*43: 56-61, 1986.
4. Astrand, I., Ehrner-Samuel, H., Kibourn, A., Ovrurn, P., Toluene exposure.I.Concentrations in alveolar air and blood at rest and during exercize. *Work.Env.Health* 9: 119-130, 1972.
- 5.. Gjerde, H., Smith-Kieland, A., Norman, P.T., Morland, P.T., Driving while under the influence of toluene. *For.Sci.Int.* 44 77-83, 1990.

(DRUGS IN THE NEWS continued next page.)

MDMA CLINICAL TRIALS APPROVED

The *Wall Street Journal* recently reported that the FDA has approved the first clinical trial of MDMA as a treatment for post traumatic stress disorder (PTSD). A small nonprofit group wants to develop MDMA, or a derivative, as a drug to enable patients to cope with deep, painful emotions honestly and openly. This is especially important in the aftermath of the 9/11 tragedy.

The protocol calls for 20 subjects, 12 of which would undergo MDMA assisted therapy while 8 would receive a placebo regimen. Each person would also undergo 16 hours of therapy without drugs. Institutional Human Research Board approval is still pending on this study. ☹

(Editor's note: MDMA is featured in Journal Club)

CASE NOTES

The Postmortem Detection of Phencyclidine in Los Angeles County

Submitted by Dan Anderson, Los Angeles County Dept. of Coroner

It has been brought to my attention that many questions still exist about an old drug, phencyclidine (PCP). How often is our laboratory detecting the drug? Is it really necessary to continue to screen for the drug? What type of levels is our laboratory detecting? What concentrations are you detecting in homicide victims? What are the ages of these individuals? All of these questions prompted a two-year query (2000-2001) of our toxicology database. The following table is a summary of all PCP positive deaths in Los Angeles County:

Mode of Death	No. of Cases	Age		Central Blood PCP Levels (ng/ml)	
		Range	Average	Range	Average (# of Cases)
Homicide	85 *	17-56	29	3.1-870	129 (68)
Accident	38	0-52	37	1.8-1,070	251 (32)
Suicide	4	21-30	24	13-498	225 (4)
Natural	4	35-49	41	38-59	31 (2)
Undetermined	3	23-44	35	37-84	61 (2)
Total	134				

*Note: 79 of 85 homicides were due to a Gunshot Wound.

Year 2000: 5,040 Cases received for Toxicological analysis

Year 2001: 5,392 Cases received for Toxicological analysis

Confirmed Positive PCP rate: 134/10,432 or 1.3%

In conclusion, although PCP is obviously not the primary drug of abuse detected in our laboratories, it still must be addressed. ☹

JOURNAL CLUB - A Special Focus on MDMA

Submitted by H. Chip Walls, B.S., University of Miami School of Medicine

Segura M, Ortuno J, Farre M, et al: 3,4-Dihydroxymethamphetamine (HHMA). A major in vivo 3,4-methylenedioxyamphetamine (MDMA) metabolite in humans. *Chem Res Toxicol* 14(9):1203-8, 2001.

Hernandez-Lopez C, Farre M, Roset PN, et al: 3,4-Methylenedioxyamphetamine (ecstasy) and alcohol interactions in humans: psychomotor performance, subjective effects, and pharmacokinetics. *J Pharmacol Exp Ther* 300(1):236-44, 2002.

Bankson MG, Cunningham KA: 3,4-methylenedioxyamphetamine (MDMA) as a unique model of serotonin receptor function and serotonin-dopamine interactions. *Journal of Pharmacology & Experimental Therapeutics* 297(3):846-852, 2001.

Logan BK, Couper FJ: 3,4-Methylenedioxyamphetamine (MDMA, ecstasy) and driving impairment. *J Forensic Sci* 46(6):1426-33, 2001.

Irvine RJ, Toop NP, Phillis BD, et al: The acute cardiovascular effects of 3,4-methylenedioxyamphetamine (MDMA) and p-methoxyamphetamine (PMA). *Addiction Biology* 6(1):45-54, 2001.

Kopelman MD, Reed LJ, Marsden P, et al: Amnesic syndrome and severe ataxia following the recreational use of 3,4-methylenedioxyamphetamine (MDMA, 'ecstasy') and other substances. *Neurocase* 7(5):423-32, 2001.

Christophersen A: Amphetamine designer drugs - an overview and epidemiology. *Toxicology Letters* 112:127-131, 2000.

Logan BK: Amphetamines: An update on forensic issues. *Journal of Analytical Toxicology* 25(5):400-404, 2001.

Rothman R, Baumann M, Dersch C, et al: Amphetamine-type central nervous system stimulants release norepinephrine more potently than they release dopamine and serotonin. *Synapse* 39(1):32-41, 2001.

Elliott SP: Analysis of 4-methylthioamphetamine in clinical specimens. *Ann Clin Biochem* 38(Pt 4):339-47, 2001.

Bogusz M, Kruger K, Maier R: Analysis of underivatized amphetamines and related phenethylamines with high-performance liquid chromatography - Atmospheric pressure chemical ionization mass spectrometry. *Journal of Analytical Toxicology* 24(2):77-84, 2000.

Casari C, Andrews AR: Application of solvent microextraction to the analysis of amphetamines and phencyclidine in urine. *Forensic Sci Int* 120(3):165-71, 2001.

Weinmann W, Renz M, Vogt S, et al: Automated solid-phase extraction and two-step derivatisation for simultaneous analysis of basic illicit drugs in serum by GC/MS. *International Journal of Legal Medicine* 113(4):229-235, 2000.

O'Cain PA, Hletko SB, Ogden BA, et al: Cardiovascular and sympathetic responses and reflex changes elicited by MDMA. *Physiology & Behavior* 70(1-2):141-148, 2000.

(Journal Club continued next page . . .)



CALL FOR CASE NOTES

We need your contribution! This need not take much time.

Your case note should be about 1/2 page in length, no more than a full page. Material and/or a disk (arial font, size 10, Microsoft Word 6.0 preferred) may be submitted to:

Joseph R. Monforte, Ph.D., DABFT, ToxTalk Editor e-mail: DrMonforte@aol.com

Other items of interest to SOFT members are also welcome.

Lester SJ, Baggott M, Welm S, et al: Cardiovascular effects of 3,4-methylenedioxymethamphetamine. A double-blind, placebo-controlled trial. *Annals of Internal Medicine* 133(12):969-73, 2000.

Aalberg L, DeRuiter J, Noggle FT, et al: Chromatographic and mass spectral methods of identification for the side-chain and ring regioisomers of methylenedioxymethamphetamine. *Journal of Chromatographic Science* 38(8):329-37, 2000.

Rodgers J: Cognitive performance amongst recreational users of "ecstasy". *Psychopharmacology* 151(1):19-24, 2000.

Verkes R, Gijsman H, Pieters M, et al: Cognitive performance and serotonergic function in users of ecstasy. *Psychopharmacology* 153(2):196-202, 2001.

Teter CJ, Guthrie SK: A comprehensive review of MDMA and GHB: two common club drugs. *Pharmacotherapy* 21(12):1486-513, 2001.

Ramseier A, Siethoff C, Caslavská J, et al: Confirmation testing of amphetamines and designer drugs in human urine by capillary electrophoresis-ion trap mass spectrometry. *Electrophoresis* 21(2):380-387, 2000.

Carter N, Ruttly GN, Milroy CM, et al: Deaths associated with MBDB misuse. *International Journal of Legal Medicine* 113(3):168-70, 2000.

Mortier KA, Dams R, Lambert WE, et al: Determination of paramethoxyamphetamine and other amphetamine-related designer drugs by liquid chromatography/sonic spray ionization mass spectrometry. *Rapid Commun Mass Spectrom* 16(9):865-70, 2002.

Clauwaert KM, Van Bocxlaer JF, De Letter EA, et al: Determination of the designer drugs 3,4-methylenedioxymethamphetamine, 3,4-methylenedioxyethylamphetamine, and 3,4-methylenedioxyamphetamine with HPLC and fluorescence detection in whole blood, serum, vitreous humor, and urine. *Clinical Chemistry* 46(12):1968-1977, 2000.

Valtier S, Cody JT: Differentiation of clobenzorex use from amphetamine abuse using the metabolite 4-hydroxyclobenzorex. *Journal of Analytical Toxicology* 24(7):606-13, 2000.

De Letter EA, Clauwaert KM, Lambert WE, et al: Distribution study of 3,4-methylenedioxymethamphetamine and 3,4-methylenedioxyamphetamine in a fatal overdose. *J Anal Toxicol* 26(2):113-8, 2002.

Kelly PA: Does recreational ecstasy use cause long-term cognitive problems? *Western Journal of Medicine* 173(2):129-30, 2000.

Moeller MR, Kraemer T: Drugs of abuse monitoring in blood for control of driving under the influence of drugs. *Ther Drug Monit* 24(2):210-21, 2002.

Murray JB: Ecstasy is a dangerous drug. *Psychological Reports* 88(3 Part 1):895-902, 2001.

Lekskulchai V, Mokkhaveva C: Evaluation of roche abuscreen ONLINE amphetamine immunoassay for screening of new amphetamine analogues. *Journal of Analytical Toxicology* 25(6):471-475, 2001.

Decaestecker T, De Letter E, Clauwaert K, et al: Fatal 4-MTA intoxication: development of a liquid chromatographic-tandem mass spectrometric assay for multiple matrices. *J Anal Toxicol* 25(8):705-10, 2001.

Valentine J, Middleton R: GC-MS identification of sympathomimetic amine drugs in urine: Rapid methodology applicable for emergency clinical toxicology [Review]. *Journal of Analytical Toxicology* 24(3):211-222, 2000.

Kish SJ: How strong is the evidence that brain serotonin neurons are damaged in human users of ecstasy? *Pharmacol Biochem Behav* 71(4):845-55, 2002.

Cami J, Farre M, Mas M, et al: Human pharmacology of 3,4-methylenedioxymethamphetamine ("ecstasy"): psychomotor performance and subjective effects. *J Clin Psychopharmacol* 20(4):455-66, 2000.

Kelly PA: Impaired cognitive performance in drug free users of recreational ecstasy (MDMA). *Journal of Neurology, Neurosurgery & Psychiatry* 68(6):690, 2000.

Gouzoulis-Mayfrank E, Daumann J, Tuchtenhagen F, et al: Impaired cognitive performance in drug free users of recreational ecstasy (MDMA) [see comments]. *J Neurol Neurosurg Psychiatry* 68(6):719-25, 2000.

Curran HV: Is MDMA ('Ecstasy') neurotoxic in humans? An overview of evidence and of methodological problems in research. *Neuropsychobiology* 42(1):34-41, 2000.

Turner JJ, Parrott AC: 'Is MDMA a human neurotoxin?': diverse views from the discussants. *Neuropsychobiology* 42(1):42-8, 2000.

De Letter EA, De Paepe P, Clauwaert KM, et al: Is vitreous humour useful for the interpretation of 3,4-methylenedioxymethamphetamine (MDMA) blood levels? Experimental approach with rabbits. *International Journal of Legal Medicine* 114(1-2):29-35, 2000.

Doyon S: The many faces of ecstasy. *Current Opinion in Pediatrics* 13(2):170-6, 2001.

Anonymous: MDMA. *Harvard Mental Health Letter* 18(1):5-6, 2001.

Shannon M: Methylenedioxymethamphetamine (MDMA, "Ecstasy"). *Pediatric Emergency Care* 16(5):377-380, 2000.

de la Torre R, Farre M, Ortuno J, et al: Non-linear pharmacokinetics of MDMA ('ecstasy') in humans. *British Journal of Clinical Pharmacology* 49(2):104-9, 2000.

Pichini S, Navarro M, Farre M, et al: On-site testing of 3,4-methylenedioxymethamphetamine (ecstasy) in saliva with Drugwipe and Drugread: a controlled study in recreational users. *Clin Chem* 48(1):174-6, 2002.

Van Kampen J, Katz M: Persistent psychosis after a single ingestion of 'ecstasy'. *Psychosomatics* 42(6):525-7, 2001.

Kalant H: The pharmacology and toxicology of "ecstasy" (MDMA) and related drugs. *Cmaj* 165(7):917-28, 2001.

Ling LH, Marchant C, Buckley NA, et al: Poisoning with the recreational drug paramethoxyamphetamine ("death"). *Medical Journal of Australia* 174(9):453-455, 2001.

McCann U, Szabo Z, Scheffel U, et al: Positron emission tomography findings in heavy users of MDMA - Reply. *Lancet* 353(9152):592-593, 1999.

Zhao HR, Brenneisen R, Scholer A, et al: Profiles of urine samples taken from ecstasy users at rave parties: Analysis by immunoassays, HPLC, and GC-MS. *Journal of Analytical Toxicology* 25(4):258-269, 2001.

Skender L, Karacic VV, Brcic II, et al: Quantitative determination of amphetamines, cocaine, and opiates in human hair by gas chromatography/mass spectrometry. *Forensic Sci Int* 125(2-3):120-126, 2002.

Fang C, Chung YL, Liu JT, et al: Rapid analysis of 3,4-methylenedioxymethamphetamine: a comparison of nonaqueous capillary electrophoresis/fluorescence detection with GC/MS. *Forensic Sci Int* 125(2-3):142-8, 2002.

Jurado C, Gimenez MP, Soriano T, et al: Rapid analysis of amphetamine, methamphetamine, MDA, and MDMA in urine using solid-phase microextraction, direct on-fiber derivatization, and analysis by GC-MS. *Journal of Analytical Toxicology* 24(1):11-6, 2000.

Parrott AC: Recreational Ecstasy/MDMA, the serotonin syndrome, and serotonergic neurotoxicity. *Pharmacol Biochem Behav* 71(4):837-44, 2002.

Bhattachary S, Powell JH: Recreational use of 3,4-methylenedioxymethamphetamine (MDMA) or 'ecstasy': evidence for cognitive impairment. *Psychological Medicine* 31(4):647-658, 2001.

Dal Cason TA: A re-examination of the monomethoxy positional ring isomers of amphetamine, methamphetamine and phenyl-2-propanone. *Forensic Science International* 119(2):168-94, 2001.

Felscher D, Schulz K: Screening of amphetamine/methamphetamine and their derivatives in urine using FPIA and Triage 8 and the Scope and limits of a subsequent identification by means of the REMEDI HS system. *J Forensic Sci* 45(6):1327-31, 2000.

Herraez-Hernandez R, Campins-Falco P, Verdu-Andres J: Sensitive determination of methylenedioxyated amphetamines by liquid chromatography. *Analyst* 126(5):581-586, 2001.

Liechti ME, Vollenweider FX: The serotonin uptake inhibitor citalopram reduces acute cardiovascular and vegetative effects of 3,4-methylenedioxymethamphetamine ('Ecstasy') in healthy volunteers. *Journal of Psychopharmacology* 14(3):269-274, 2000.

(**JOURNAL CLUB** continued next page ...)

Liechti ME, Vollenweider FX: The serotonin uptake inhibitor citalopram reduces acute cardiovascular and vegetative effects of 3,4-methylenedioxymethamphetamine ('Ecstasy') in healthy volunteers. *Journal of Psychopharmacology* 14(3):269-274, 2000.

Clauwaert KM, Van Bocxlaer JF, De Leenheer AP: Stability study of the designer drugs "MDA, MDMA and MDEA" in water, serum, whole blood, and urine under various storage temperatures. *Forensic Sci Int* 124(1):36-42, 2001.

Brunnenberg M, Kovar KA: Stereospecific analysis of ecstasy-like N-ethyl-3,4-ethylenedioxyamphetamine and its metabolites in humans. *Journal of Chromatography B* 751(1):9-18, 2001.

Kovar KA: Stereospecific analysis of ecstasy-like N-ethyl-3,4-methylenedioxyamphetamine and its metabolites in humans. *Journal of Chromatography. B, Biomedical Sciences & Applications* 751(1):9-18, 2001.

Kraemer T, Theis G, Weber A, et al: Studies on the metabolism and toxicological detection of the amphetamine-like anorectic fenproporex in human urine by gas chromatography-mass spectrometry and fluorescence polarization immunoassay. *Journal of Chromatography B* 738(1):107-118, 2000.

Colado MI, Camarero J, Mehan AO, et al: A study of the mechanisms involved in the neurotoxic action of 3,4-methylenedioxymethamphetamine (MDMA, 'ecstasy') on dopamine neurones in mouse brain. *Br J Pharmacol* 134(8):1711-23, 2001.

Martin TL: Three cases of fatal paramethoxyamphetamine overdose. *J Anal Toxicol* 25(7):649-51, 2001.

Morland J: Toxicity of drug abuse--amphetamine designer drugs (ecstasy): mental effects and consequences of single dose use. *Toxicology Letters* 112-113:147-52, 2000.

Ricaurte G, McCann U, Szabo Z, et al: Toxicodynamics and long-term toxicity of the recreational drug, 3,4-methylenedioxymethamphetamine (MDMA, 'Ecstasy'). *Toxicology Letters* 112:143-146, 2000.

Maurer HH, Bickeboeller-Friedrich J, Kraemer T, et al: Toxicokinetics and analytical toxicology of amphetamine-derived designer drugs ('Ecstasy'). *Toxicology Letters* 112-113:133-42, 2000.

Kraemer T, Maurer HH: Toxicokinetics of amphetamines: metabolism and toxicokinetic data of designer drugs, amphetamine, methamphetamine, and their N-alkyl derivatives. *Ther Drug Monit* 24(2):277-89, 2002.

Leshner AI: What should the public be told about the risks of ecstasy? *Jama* 287(5):585, 2002.

Boire RG: What should the public be told about the risks of ecstasy? *Jama* 287(5):585, 2002.

Wareing M, Fisk JE, Murphy PN: Working memory deficits in current and previous users of MDMA ('ecstasy'). *British Journal of Psychology* 91(Pt 2):181-8, 2000. ☹

SPECIAL INSTRUCTIONS: Show this page to your Significant Other

ATTENTION "SO-SOFT" (Significant Others)

Submitted by Pat Monforte

I had a chance to "chit-chat" with Carol and Brad Hepler during their recent visit to Arizona. We are going to have such a great time during the SOFT meeting in Dearborn!! Carol mentioned so many possibilities: Did you know the Hyatt Dearborn is part of a great mall linked by a tram? Or we can head up north to Somerset Mall featuring some of the best stores you could imagine (\$\$\$\$\$). How's a tour of the Edsel Ford mansion along the lake in Grosse Pointe sound? There's always Greektown for fantastic ethnic dining and casino gambling. We'll find some way to spread the word during the meeting (try the registration area). Okay Deb, Carol, Max, Rachel, Patty, Barb and all you other "guests" - pack up your walking shoes and get ready to roll!!!! ☹

ELMER GORDON OPEN FORUM

AN OPPORTUNITY FOR INFORMAL DIALOGUE

Send items for this section to Editor Joseph Monforte: DrMonforte@aol.com.

Congratulations to the following SOFT members who were recently honored by the American Academy of Forensic Sciences:

C. Nicholas Hodnett, Ph.D., DABFT (Westchester County Dept of Labs) - Alexander O. Gettler Award
Michael McGee, B.S., DABFT (New York City MEO) - Ray Abernethy Award
Sarah Kerrigan, Ph.D. (New Mexico Department of Health) - Irving Sunshine Award
Robin Evans, B.A. (Baltimore) - June K. Jones Scholarship

Thanks for the inquiries and encouraging words. Pat Monforte is on the long, bumpy road to post-op shoulder recovery and looks forward to seeing everyone when she returns to the "scene of the crime" in October. (Pat and Joe honeymooned at the Dearborn Hyatt 24+ years ago). ☺

CAREER OPPORTUNITIES

Positions available are listed for the consideration of SOFT members. There is no fee for this service. The information will be repeated in the next issue only if the person who submitted it confirms the information. If you have a job position available, e-mail **ToxTalk** Editor Monforte at DrMonforte@aol.com.

DEPUTY CHIEF TOXICOLOGIST for NJ State Tox Lab: PhD + 6 yr tox experience, duties include overseeing law enforcement drug testing program, expert testimony, use and evaluation of instrumentation, including HPLC, GC-MS and AXSYM. Salary \$90,000 to \$100,000 per year. Send resume to Nieta Steele, Human Resources Manager, Division of Criminal Justice, P O Box 085, Trenton, NJ 08625

Employment opportunities are also listed on the SOFT website. For more information, go to www.soft-tox.org ☺

PROFESSIONAL CALENDAR

SOFT MEETINGS: **2002** - Detroit, MI - Dan Isenschmid /Brad Hepler October 13-17, 2002
 2003 - Portland, OR - Kent Johnson **2006** - Austin, TX - Rod McCutcheon
 2004 - Washington, D.C. - Marc LeBeau **2007** - Chapel Hill, NC - Ruth Winecker
 2005 - Nashville, TN - Louis Kuyendall

TIAFT 40th international Meeting: August 26-30, 2002, Paris, France. For more information, go to www.tiaft.org

International Association Of Forensic Sciences: September 2-7, 2002, Montpellier, France. Information by e-mail: algcsi@mnet.fr

Northeastern Association of Forensic Scientists: Nov. 4-7, 2002, Atlantic City, NJ. Contact Christopher Huber, NEAFS Pres-elect at 609-671-0022 or e-mail NO11HUBERC@gw.njsp.org

Canadian Society of Forensic Science - 50th Anniversary: *Forensic Science: Public or Private Enterprise*, March 24-29, 2003, Vancouver, BC, Canada. Contact: www.csfs.ca

8th International Congress of Therapeutic Drug Monitoring & Clinical Toxicology: September 7-22, 2003, Basel, Switzerland. Contact www.ictdmet2003.ch

All members and others are encouraged to contribute to **ToxTalk**. Please submit your contribution to:

Joseph R. Monforte, Ph.D., DABFT, ToxTalk Editor, by e-mail at DrMonforte@aol.com

5-15-02 Pat



**SOCIETY OF FORENSIC
TOXICOLOGISTS**

2002 ANNUAL MEETING

**HYATT REGENCY
DEARBORN, MICHIGAN**

OCTOBER 13-17, 2002

**PRELIMINARY PROGRAM
CALL FOR ABSTRACTS
REGISTRATION FORM**



SOCIETY OF FORENSIC TOXICOLOGISTS
2002 ANNUAL MEETING
HYATT REGENCY - DEARBORN, MI
OCTOBER 13-17, 2002

WELCOME!

We look forward to seeing you at the 2002 Annual Meeting of the Society of Forensic Toxicologists at the newly renovated Hyatt Regency in Dearborn, Michigan conveniently located between the Metropolitan Wayne County Airport and Downtown Detroit. The meeting will feature workshops on Sunday and Monday and scientific sessions Tuesday through Thursday. As you will notice in the preliminary program, the meeting will be virtually all-inclusive. Continental breakfast will be available daily, and lunches will be provided on Tuesday through Thursday. In addition there will be a welcoming reception and a reception with the exhibitors. Finally there will be a gala President's reception Wednesday evening at the remarkable Henry Ford Museum featuring genuine Motown entertainment!

Weather

You will need your camera, as you will be visiting the Detroit area at or near peak fall foliage. The weather in October is pleasant with mild days around 60°F and cool, crisp evenings around 40°F.

Hotel Accommodations

Reservations (\$120 single/double + tax) may be made on-line through the link on the SOFT web-site www.soft-tox.org. Select your desired arrival and departure dates and type G-SOFT in the Group / Corporate space to obtain the group rate on-line. You may also call the hotel directly at 1-313-593-1234. To obtain the group rate, you must tell the reservations agent that you are with the Society of Forensic Toxicologists. The deadline for the special SOFT rate is Friday, September 13, 2002.



Airport

You will be flying into Detroit Metropolitan Wayne County Airport (DTW). There is no hotel shuttle from the airport, but there is a wide variety of ground transportation available including shuttle vans, taxis and limousines. There are Ground Transportation booths available to assist you in the baggage claim areas. You can obtain most of the airport information you will need at www.metroairport.com. If you arrive on Northwest Airlines you will be arriving in the spectacular new \$1.2 billion Edward H. McNamara Terminal (opening February 24, 2002). For Northwest Airlines reservations and information about the new airport visit Northwest Airlines on the web at www.nwa.com

Things to Do

There is much to see and do in the metropolitan Detroit area. For additional information visit www.visitdetroit.com. Although a rental car is not necessary at the meeting, a rental car is recommended if you plan to do extensive sightseeing. A car rental desk is available in the Hyatt Hotel Lobby. Hotel parking is complimentary. A concierge is also available at the hotel to assist you in making local arrangements. There are several restaurants and a large shopping mall within walking distance of the hotel. You may preview the shopping mall at www.shopfairlane.com. If your schedule allows your visit to extend beyond the metro area information may be found at www.michigan.org. Finally, don't forget to look at the web-site of the Henry Ford Museum where our President's reception will be held by clicking the following link www.hmgv.org

WE LOOK FORWARD TO SEEING YOU IN WAYNE COUNTY, MICHIGAN!



Edward H. McNamara
County Executive

Bradford Hepler, Ph.D.
Meeting Co-Host
Bhepler@co.wayne.mi.us
313-833-2552

Daniel Isenschmid, Ph.D.
Meeting Co-Host
Disensch@co.wayne.mi.us
313-833-2557

Amanda Jenkins, Ph.D.
Scientific Program Chair
cccotox@inetmail.att.net
216-721-5610



SOFT 2002
OCTOBER 13-17, 2002
HYATT REGENCY – DEARBORN, MICHIGAN



WORKSHOP PROGRAM ABSTRACTS

Workshop # 1 – Sunday, October 13, 2002

8:00 a.m. – 6:00 p.m.

DUID - From Research to the Courts

Co-Chairs: Laurel Farrell, B.A., J. Robert Zettl, B.S., M.P.A

This full day workshop will focus on two aspects of DUID cases. Opening remarks, provided by NHTSA, will outline their involvement in DUID programs and research.

The first area of focus will be driving research studies. We will look at both driving simulator and on-the-road research studies. Two researchers will present the components of driving, how their protocols measure performance and if these performance measures are adequate to determine drug impairment. Both will present an overview and summary of results for all studies completed at their facilities and then they will each take one study and go through it in detail. Lastly, they will provide information on future projects.

The second area of focus will be successful prosecution of a DUID case. A prosecutor will review the current DUID statutes, United States and other countries, and pertinent case law in the area of DUID. "What do prosecutors really need to know to successfully prosecute a DUID?" This will be delineated with information provided on formal training available to prosecutors, how toxicologists can get more involved in this training in their states, and how to best provide the informal training many of us do for prosecutors in each case we are involved in. We will also have a representative from the National Judicial College to provide information on the training available to judges.

Workshop # 2 – Sunday, October 13, 2002

8:00 a.m. – 12 Noon

Pharmacogenomics as an Adjunct for Certifying Drug Toxicity in Forensic Toxicology

Chair: Steven Wong, Ph.D.

Pharmacogenomics is an emerging clinical discipline that attempts to correlate drug dose and response to the genomics of the drug metabolizing enzyme and receptors of individual patients. In forensic toxicology genotyping drug metabolizing enzymes may serve as a useful adjunct for assessing drug toxicity. This introductory workshop will establish the basis of molecular biology, and introduce the principles of pharmacogenetics. This information will serve as the basis for assessing the usefulness of pharmacogenomics in deaths involving drugs utilized in psychiatry, addiction, and pain management.

Workshop # 3 – Sunday, October 13, 2002

1:30 p.m. – 5:30 p.m.

Forensic Toxicological Aspects of Human Growth and Development

Chair: Michael Corbett, Ph.D.

This workshop will discuss the impact of age with respect to forensic toxicology. Infants, young children and the elderly vary in pharmacokinetic parameters compared with most adults. Differences in external environments of these individuals such as access to drugs also impact the likelihood of drug detection. Pharmacological and external factors affecting drug detection during growth and development will be delineated.

Workshop # 4 – Sunday, October 13, 2002

1:30 p.m. – 5:30 p.m.

Solid Phase Extraction: Scientific Theory and Applications in Forensic Toxicology

Chair: Michael Telepchak, B.S., M.B.A.

This workshop will discuss the history and development of SPE with emphasis on basic silane chemistry and the manufacturing of bonded silicas. The effects of pH, polarity, and solubility on extraction performance will be delineated. Troubleshooting and extraction optimization will be followed by SPE applications with respect to mass spectrometric analysis of opiates, amphetamines and newer drugs such as GHB.

Workshop # 5 – Monday, October 14, 2002

8:00 a.m. – 6:00 p.m.

Club Drugs and Drug Facilitated Sexual Assault

Co-Chairs: Sarah Kerrigan, Ph.D., Laureen Marinetti, M.S., Adam Negrusz, Ph.D.

This workshop will discuss the pharmacology, toxicology and analysis of substances commonly encountered as either club drugs or in cases of DFSA. These drugs include GHB, MDMA, Ketamine, LSD, flunitrazepam, methamphetamine and ethanol. The history of raves and the club culture will be explored as well as new psychoactive herbs and supplements that are emerging as legal alternatives to conventional club drugs.

Workshop # 6 – Monday, October 14, 2002

8:00 a.m. – 12 Noon

Pharmacology and Toxicology of Brain Drugs

Co-Chairs: Randall Commissaris, Ph.D., Laureen Marinetti, M.S.

Researchers from Wayne State University in Detroit will present this workshop. The workshop will include an introduction to the principles of drug action and discuss concepts of receptor theory, dose response curves, drug efficacy and potency issues especially as they apply to the newer partial agonist type drugs (e.g., buprenorphine [Buprenex]), and concentration versus effect relationships. An overview of neuropharmacology and an introduction to several new psychotherapeutic agents, focusing primarily on the monoamine neurons dopamine, norepinephrine and serotonin will follow. The last three presentations will focus on current drugs of abuse including Ecstasy and GHB.

Workshop # 7 – Monday, October 14, 2002

8:00 a.m. – 12 Noon

Applications using MS/MS: Ion Traps or Triple Quads - How to Decide

Chair: Cheryl Ehorn, B.S.

This workshop will focus on comparing ion trap instruments with the bench top triple quadrupole instrument. A brief perspective on the evolution of the ion traps and the triple quads will feature new capabilities including small size, high sensitivity, versatility and efficient MS/MS (as well as MSⁿ on the ion trap). Key analytical issues to be addressed are ease of use, sensitivity, linear dynamic range, and quantitation (including the use of co-eluting internal standards). Applications to be discussed using the techniques of MS/MS include drugs in urine, blood, hair and alternate matrices.

Workshop # 8 – Monday, October 14, 2002

1:30 p.m. – 5:30 p.m.

Medicolegal Death Investigation

Chair: Carl Schmidt, M.D.

The investigation of sudden and unexpected death as practiced by the Forensic Pathologist forms the basis for this workshop. How traumatic and pathological changes seen at autopsy relate to the proper and complete understanding of cause and manner of death will be discussed in light of case history, scene investigation, and toxicology findings. Examples of how the balance between pathological and toxicological causes of death is weighed are highlighted as a central theme of this workshop.



SOFT 2002
OCTOBER 13-17, 2002
HYATT REGENCY – DEARBORN, MICHIGAN



PRELIMINARY PROGRAM

Saturday, October 12, 2002 (Pre-Meeting Events)

8:00 a.m. – 1:00 p.m. NLCP Inspector Training
2:00 p.m. – 7:00 p.m. CAP Inspector Training
3:00 p.m. – 9:00 p.m. Registration

Sunday, October 13, 2002

7:00 a.m. – 8:00 a.m. Continental Breakfast
7:30 a.m. – 5:00 p.m. Registration
9:00 a.m. – 12 Noon ABFT Examination
8:00 a.m. – 6:00 p.m. #1: DUID – Research to the Courts
8:00 a.m. – 12 Noon #2: Pharmacogenomics as an Adjunct for Certifying Drug Toxicity
12 noon – 6:00 p.m. ABFT Board Meeting
1:30 p.m. – 5:30 p.m. #3: Forensic Toxicological Aspects of Human Growth & Development
1:30 p.m. – 5:30 p.m. #4: SPE: Scientific Theory and Application in Forensic Toxicology
7:00 p.m. – 10:00 p.m. NLCP/DOT Lab Directors Workshop

Monday, October 14, 2002

7:00 a.m. – 8:00 a.m. Continental Breakfast
7:30 a.m. – 5:00 p.m. Registration
8:00 a.m. – 4:00 p.m. Exhibit Set Up
8:00 a.m. – 6:00 p.m. #5: Club Drugs and Drug Facilitated Sexual Assault
8:00 a.m. – 12 Noon #6: Pharmacology, Toxicology of Drugs and the Brain
8:00 a.m. – 12 Noon #7: Tandem MS/MS – Ion Traps or Triple Quads: How to Decide
12 noon – 6:00 p.m. SOFT Board Meeting
1:30 p.m. – 5:30 p.m. #8: Medicolegal Death Investigation
7:00 p.m. – 9:00 p.m. Welcoming Reception Featuring Microbrews / Snacks

IMPORTANT DEADLINES

ABSTRACT SUBMISSION DEADLINE – JUNE 1, 2002
EARLY REGISTRATION DEADLINE – FRIDAY, AUGUST 30, 2002 (POSTMARK OR FAX)
LAST DATE FOR PARTIAL REFUND – FRIDAY, AUGUST 30, 2002
LATE REGISTRATION DEADLINE BY MAIL – FRIDAY, SEPTEMBER 13, 2002 (POSTMARK)
HOTEL RESERVATION CUT-OFF DATE – FRIDAY, SEPTEMBER 13, 2002
POWERPOINT SUBMISSION CUT-OFF DATE – FRIDAY, SEPTEMBER 13, 2002
LATE REGISTRATION DEADLINE BY FAX – TUESDAY, OCTOBER 1, 2002

Tuesday, October 15, 2002

7:00 a.m. – 8:30 a.m. Bob Bost Consultants Breakfast
7:30 a.m. – 8:30 a.m. Continental Breakfast
7:30 a.m. – 5:00 p.m. Registration
8:30 a.m. – 10:00 a.m. General Session 1
9:00 a.m. – 4:00 p.m. Exhibits Open
10:00 a.m. – 10:30 a.m. Break
10:30 a.m. – 12 Noon General Session 2
12 Noon – 2:00 p.m. Lunch, Visit Vendors and Posters
9:00 a.m. – 4:00 p.m. Poster Session 1 Open
1:00 p.m. – 2:00 p.m. Poster Session 1 Presenters
2:00 p.m. – 3:30 p.m. General Session 3
3:30 p.m. – 4:00 p.m. Break
4:00 p.m. – 5:30 p.m. General Session 4
6:00 p.m. – 8:00 p.m. Exhibits Open - Happy Hour with Exhibitors
8:00 p.m. – 11:00 p.m. Elmer Gordon Dessert Session

Wednesday, October 16, 2002

7:15 a.m. – 8:30 a.m. ABFT Breakfast
7:30 a.m. – 8:30 a.m. Continental Breakfast
7:30 a.m. – 5:00 p.m. Registration
8:30 a.m. – 10:00 a.m. General Session 5
9:00 a.m. – 4:00 p.m. Exhibits Open
10:00 a.m. – 10:30 a.m. Break
10:30 a.m. – 12 Noon General Session 6
12 Noon – 2:00 p.m. Lunch, Visit Vendors and Posters
9:00 a.m. – 5:00 p.m. Poster Session 2 Open
1:00 p.m. – 2:00 p.m. Poster Session 2 Presenters
2:00 p.m. – 3:30 p.m. General Session 7
3:30 p.m. – 4:00 p.m. Break
4:00 p.m. – 5:30 p.m. SOFT Business Meeting
7:00 p.m. – Midnight President's Reception at Henry Ford Museum

Thursday, October 17, 2002

7:30 a.m. – 8:30 a.m. Continental Breakfast
7:30 a.m. – 12 Noon Registration
8:30 a.m. – 10:00 a.m. General Session 8
10:00 a.m. – 10:30 a.m. Break
10:30 a.m. – 12 Noon General Session 9
12 Noon – 2:00 p.m. Lunch
2:00 p.m. – 4:00 p.m. Special Session: Sherlock Holmes Workshop
"The Adventure of the Devil's Foot"
Moderator: Marina Stajic, Ph.D.
Panelists: Nick Hodnett, Ph.D., Al Poklis, Ph.D., Michael Rieders, Ph.D.
Vina Spiehler, Ph.D.



**SOFT 2002 ANNUAL MEETING
HYATT REGENCY – DEARBORN, MI
OCTOBER 13-17, 2002**



Name _____ Degree _____
 Last First
 Name to appear on badge _____
 Title _____ Agency _____
 Address _____
 E-mail _____
 Telephone _____ Fax _____
 Accompanying Person(s) _____

	Member	Non-Member	Qty.	TOTAL
FULL MEETING REGISTRATION (Late Fee Applies after 8/30/02) Includes: Admission to scientific sessions, Abstract Book, Shirt, Coffee Breaks, Continental Breakfasts, Welcoming Reception, Luncheons, Tuesday Happy Hour, Elmer Gordon Forum, and President's Reception	\$195.00	\$275.00	_____	\$ _____ Shirt Size S M L XL XXL
ACCOMPANYING PERSON REGISTRATION (Available only with full meeting registration). Includes: All the above <u>except</u> Abstract Book and Shirt.	\$150.00	\$225.00	_____	\$ _____
FULL-TIME STUDENT (Proof of full-time status required)	\$95.00	\$95.00	_____	\$ _____
LATE-FEE (Applies after August 30 to EACH of above registrations) <u>After October 1 – only On-Site Registration is available</u>	\$100.00	\$100.00	_____	\$ _____
PRESIDENT'S RECEPTION (Additional tickets for non-registrants available prior to October 1 only)	\$75.00	\$95.00	_____	\$ _____
ON-SITE REGISTRATION (President's Reception and shirt NOT included)	\$295.00	\$375.00	_____	\$ _____
Workshop # 1 – DUID – From Research to the Courts	\$120.00	\$150.00	_____	\$ _____
Workshop # 2 – Pharmacogenomics	\$60.00	\$75.00	_____	\$ _____
Workshop # 3 – Aspects of Human Growth and Development	\$60.00	\$75.00	_____	\$ _____
Workshop # 4 – SPE Scientific Theory and Applications	\$60.00	\$75.00	_____	\$ _____
Workshop # 5 – Club Drugs & Drug-Facilitated Sexual Assault	\$120.00	\$150.00	_____	\$ _____
Workshop # 6 – Pharmacology and Toxicology of Brain Drugs	\$60.00	\$75.00	_____	\$ _____
Workshop # 7 – MS/MS: Ion Traps or Triple Quads – How to Decide	\$60.00	\$75.00	_____	\$ _____
Workshop # 8 – Medicolegal Death Investigation	\$60.00	\$75.00	_____	\$ _____
ABFT Breakfast	\$25.00	\$25.00	_____	\$ _____

**ID BADGE WILL BE REQUIRED FOR ALL FUNCTIONS.
TICKET REQUIRED FOR PRESIDENT'S RECEPTION.**

TOTAL \$ _____

LATE FEE applies after Friday, August 30, 2002. No mail registrations after September 13; Deadline for late registration by fax is October 1, 2002. Payment may be made by checks drawn on a US bank or International Bank Checks or Money Order in US dollars. All payments should be made out to SOFT-2002.

Credit Card Payments: Type of Card (circle one): MASTERCARD VISA AMERICAN EXPRESS
 Card Number: _____ Expiration Date: _____
 Authorized Signature: _____ Date: _____

By signing I agree to be charged the amount indicated in TOTAL and agree to the refund policy below.

IMPORTANT - Refund policy

Refunds will be honored upon written request prior to 08/30/02 minus a \$75 fee. **There will be NO refunds after 08/30/02.**

MAIL TO: SOFT 2002 c/o Bradford Hepler, Wayne County MEO, 1300 East Warren Ave., Detroit, Michigan, 48207
FAX TO: Bradford Hepler, 313-833-2534



SOFT 2002
OCTOBER 13-17, 2002
DEARBORN, MICHIGAN



CALL FOR PAPERS AND ABSTRACT SUBMISSION

General Information

The Program Committee solicits abstracts on all forensic toxicology topics including postmortem toxicology, forensic urine drug testing, analytical toxicology of drugs, pharmacology as related to forensic toxicology, pathology as related to forensic toxicology, pediatric and geriatric case reports, and the relationship between drug concentrations and performance impairment. Scientific papers selected for presentation will be divided into two groups: 15-minute platform presentations and poster presentations. The Program Committee will select appropriate abstracts from those **submitted by the June 1, 2002, deadline**. The presenting authors of all papers will be required to register for the meeting. Only abstracts written in English will be considered. The format for the preparation of the abstracts is provided on the submission form.

Platform (Oral) Presentations

ONLY 35-mm slides or LCD (PowerPoint) presentations will be accepted. Each presenter will be provided with 10 minutes to present their material and 5 minutes to answer questions. Platform presentations must cover the material reported in the abstract. Regardless whether 35 mm slides or LCD projection are used, information on the slides must be kept simple with plenty of open spaces between lines. Limit information on each slide to seven lines or less. Do not crowd the slide. Avoid backing up in slide lectures. If you need a slide twice, make duplicate slides. White on black, white on blue, blue on yellow or yellow on blue project best. Avoid red and blue or other non-contrasting color combinations. If using 35mm slides, it is highly recommended that you provide your own carousel.

LCD Projector – Policies and Procedures

A LCD projector will be available for use at this meeting. Any LCD format platform presentation **MUST** be submitted in advance (Deadline September 13, 2002) on 3.5-inch disk or by E-mail in Microsoft PowerPoint (IBM format only) to the Program Chair (contact information on abstract submission form). There will be **NO** exception to these requirements. All presentations will be pre-loaded and tested on a computer (and backup computer) provided by SOFT. You may bring your own laptop as an additional backup, however in order to improve flow between presentations this will only be used in the event of

unexpected technical problems. Slide projectors will be available for presenters who do not meet this deadline, or format requirement.

Poster Presentations

Each author selected for poster presentation will be provided with a 4' x 8' tack board on which to display material related to his or her presentation. Presenters must bring their own tacks. Authors have complete freedom to choose ways of displaying their information in figures, tables, text, photographs, etc; however, they should avoid crowding too much information into a limited space. The poster should be readable from a distance of 3 feet. Posters will be kept up for the entire day they are scheduled. Please be sure your poster is mounted by 8 a.m. and leave it mounted until 5 p.m. It will only be necessary for the author to be present at the poster for the one-hour noted in the program.

Abstract Submission - Abstracts may be submitted in one of two ways:

1. Electronically by e-mail – Be sure to provide all the information required on the back of this form in the body of your e-mail text. Be sure to type **ONE** of the disclosure statements in your-email. By submission of your abstract electronically, no signature is required for the disclosure. The abstract itself is to be provided as an attachment in Microsoft Word **ONLY** using the format described on the back of this form.
2. By mail – Complete the back of this form. The abstract itself **MUST** be provided on diskette in Microsoft Word **ONLY**. Please label the diskette with the presenting author's name. Include four (4) hard copies of the abstract.

Disclosure Information (Please Read Carefully)

In order for AACC ACCENT credits to be provided for attendees to the SOFT 2002 Annual Meeting by the TDM/Toxicology Division of AACC each speaker must provide disclosure of potential bias or conflict of interest. This information is provided to any attendee who requests information concerning possible bias, conflict of interest or commercialism of any presentation. Please complete the information as it applies to you on the submission form.

ABSTRACT SUBMISSION DEADLINE IS JUNE 1, 2002



SOFT 2002
ABSTRACT SUBMISSION FORM
DEADLINE – JUNE 1, 2002



Information to be provided with the Abstract

Please complete the following information (or provide it electronically, if submitting your abstract by e-mail):

Presenting Author Name _____
 Mailing Address _____

Telephone Number _____
 Fax Number _____
 E-mail _____

Co-author(s) Name(s) and Address(es) _____

Attach additional pages if necessary

Has this paper been presented before? Yes ___ No ___
 If yes, where and when? _____

Select your presentation preference:
 Platform ___ 35-mm () Powerpoint () Poster _____

Format of the Abstract

Type the title in upper and lower case letters. Separate the title from the authors by single blank line. Type the name(s) of the authors and, followed by the address(es) (affiliation, city, state, country) of the authors. For multiple addresses use a numerical superscript after the name. Use an asterisk (*) to identify the presenting author. Separate the author's names from the body of the abstract by a single blank line. Identify three key words at the bottom of the abstract. See example below:

The Analysis of Oobleck from Precipitation Collected in the World of Dr. Seuss

Cindy Lou Who¹, Yertle Turtle², and Bartholomew Cubbins².
¹Whoville University, Whoville, MI, U.S.A.; ²Mulberry Street Consulting Group, Prairie of Prax, MN, U.S.A.

Indent each paragraph three spaces. Type the entire abstract single-spaced. Do not type in all capital letters. Capitalize and punctuate exactly as you wish the abstract to appear in the program. Do not double space after a period. The abstract should be limited to one 8 1/2 x 11-inch page using Times New Roman font, size 12.

The abstract must contain the following information: (1) author(s) name(s) and affiliation, city, state, country; (2) short specific title; (3) statement of paper's objective; (4) statement of methods, if relevant; (5) statement of results; (6) statement of conclusion; (7) key words (three).

Key Words: Oobleck, Seuss, Precipitation

AACC Policy on Disclosure of Potential Bias or Conflict of Interest

AACC requires that all speakers in accredited Continuing Education Activities to disclose any possible bias or conflict of interest regarding the topic that is being presented. A conflict of interest is defined as any financial interest of the speaker in a company's products or services discussed in the presentation. For example, if the speaker (1) holds stock in the company, (2) is paid salary or consultant fees by the company, (3) has grant support from the company and/or (4) has received support for travel expenses, honoraria, etc. from the company, a conflict of interest exists regarding this topic and must be reported. If the speaker has a financial interest in a company *but is not discussing a product or service of that company, no conflict of interest must be disclosed.*

Please place an X next to ONE of the DISCLOSURE STATEMENTS indicated below:

_____ I have read the above statements and I declare that neither I nor any member of my immediate family has a financial interest in a company as defined in the AACC policies on conflict of interest.

_____ I have read the above statements and I declare that I have (or a member of my immediate family has) a financial interest in a company as defined in the AACC policies on conflict of interest. Please indicate the nature of the conflict of interest (Grant/Research Support ___; Salary/Consultant ___; Stocks/Bonds ___; Honoraria/Expenses ___) and the Source (Company) providing financial support _____

Signature _____
 Date: _____

By submission of this abstract by e-mail no signature is required for the disclosure. You must, however, type the applicable disclosure statement in your e-mail text.

Submission Address:

Amanda Jenkins, PhD, SOFT 2002 Program Chair
 c/o Cuyahoga County Coroner's Office
 Toxicology Laboratory
 11001 Cedar Road
 Cleveland, OH 44106

Phone (216) 721-5610 Fax (216) 707-3174
 E-mail: cccotox@inetmail.att.net

NOTIFICATION: You will be notified of receipt of your abstract within two weeks of submission. If you do not receive notification in this time frame, please contact the Program Chair to make sure your abstract was received. Correspondence from the Program Chair will be with the presenting author only. Notification of acceptance will be made by July 31, 2002.